



DIGITAL PRINT BUREAU

WIDE FORMAT PAPER
& TEXTILE PRINTING

LASER PRINTING

TRANSPARENCIES

PRINT FINISHING



PHOTOGRAPHIC &

We print using a Hewlett Packard DesignJet Z6100 Wide format inkjet printer. The printer can print on media up to 152cm (60") wide. We also use an Epson SureColor P9000v which can print on media up to 118 cm (44") wide.

We have media we keep in stock on rolls of 1.52m or 1.06m wide, prices are charged by the half metre off the roll or A sizes , Please come in to see our price list for details, or request by email. Prints can be made up to 10 metres long.

We can group smaller images together to fill the print area, for example: 3 x A3 images will fit on to a 107cm x 50cm roll.

Prints can be produced on to a range of different media. We will also print onto papers that you may wish to supply yourself providing they are suitable. Please make sure it's not thinner than newsprint, 80 gsm and no heavier than around 350 - 400 gsm. **Please note: If we print on to your own uncoated paper colour and vibrancy will be compromised.** Please come in beforehand to show an example and discuss requirements.

We cannot print on Newsprint (The ink soaks through and the printer tears the paper which can ruin the print heads).

PERMANENCY OF PRINTS

We use pigment-based inks that have a much longer lifespan than the normal dye based inks but these are still not waterproof. The life of a print is affected by many factors including exposure to UV and other light waves, air pollution, humidity, air circulation and the media used. It is recommended that prints are framed under glass for longevity. The pigment-based inks we use will not fade for at least 75 years.

PREPARING YOUR FILES

Saving your Photoshop files: It is recommended that images are saved as **TIFF** files or **Highest Quality JPEG**. They should be at the print size you require (please note maximum printable width is 2cm smaller than the roll width) and saved at a resolution of at least 200ppi (pixels per inch). Normal Printing is at 300ppi.

Please flatten all the layers. Colour images should also be saved in RGB mode. See staff in the EPI centre for help with scanning your images.

Saving Illustrator and inDesign files: if possible export your file as a PDF with all fonts and images embedded.

Accepted file types PDF, TIFF, JPG.

PRINT PRICE LIST - WIDE FORMAT INKJET

A2

A1

Fine Art Matt 315gsm	£9.00	£18.00
Somerset Paper 255gsm	£10.00	£20.00
Matt Paper 180gsm	£4.00	£8.00
Satin Photo Paper 235gsm	£5.00	£10.00
Gloss Photo Paper 235gsm	£5.00	£10.00
Canvas 410gsm	£9.00	£18.00
Matt 180gsm Double Sided	£6.00	na
Your own paper supply	£3.00	£6.00
Your own paper double sided	£5.00	£8.00
Transparent Silk Screen Film	£4.00	£8.00
Backlit Film for light Boxes	£9.00	£18.00

WIDE FORMAT INKJET ROLL SIZES

Roll Paper width:	Somerset	111cm and 152 cm
	Fine Art Matt	111cm
	Matt	106cm and 152cm
	Satin/Gloss	106cm and 152cm
	Backlit Film	127cm
	Silk Screen Film	61cm
	Canvas	152cm

Print length can be upto 10 metres. Please come in to see prices for larger prints.

DIGITAL TEXTILES PRINT

DIGITAL TEXTILES PRINT PROCESS

Fabrics go through three different processes before the fabric is ready for use.

PRINT	Dyes are printed but not fixed
STEAM	To fix the dyes into the fabric
WASH	To remove excess dye & coating

Please note that after the fabric has been steamed & washed there will be some shrinkage in the width & length, mostly in length. This will differ with every fabric as they are made from different fibres.

STEAMING

Lightweight fabrics - 5m, Medium-Heavyweight - 3m, longer lengths will have to be cut & steamed individually. The steaming charge is £4 for up to 5 metres.

PREPARING YOUR FILES

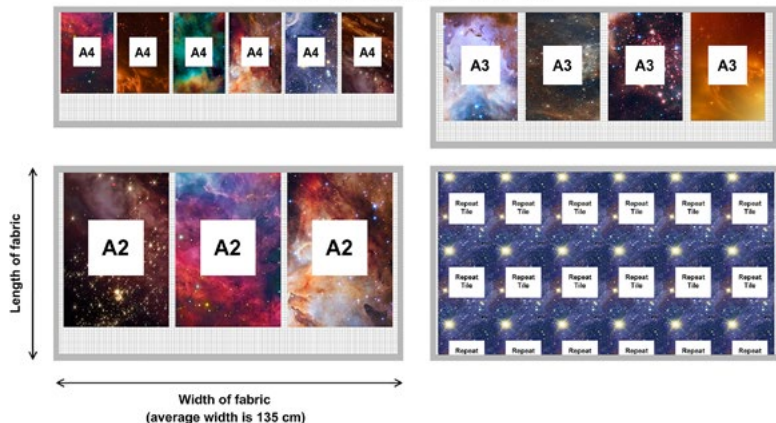
- All images must be saved as Jpeg files**
- Saved as the print size you require e.g. A3/A2**
- Resolution 200ppi (pixels per inch)**
- Saved in RGB colour mode**

The printer can print onto fabric up to 136cm-150cm wide. We recommend you use and fill the width with print as you will be charged for the excess fabric. Fabric comes on a roll so you can print as long as you need in length.

PRODUCING A REPEAT PATTERN

The Mimaki printer can print straight match repeats both horizontally & vertically. If you wish to produce a pattern that is to be repeated, it is your responsibility to make sure that the pattern seamlessly joins at the top, bottom & sides of your repeat tile. Please bring your single repeat tile, which can then be repeated over a specified length. **It is recommended that you check your designs thoroughly before handing them in to be printed.**

SWATCH LAYOUT & SIZES ACROSS FABRIC WIDTH



COATED FABRIC PRICES

COTTON LAWN £23.50	HABOTAI SILK MEDIUM £28
COTTON DUCK CANVAS £27.50	HABOTAI SILK HEAVY £33
COTTON SATIN £25	BAMBOO SILK SATIN £28
COTTON TWILL £25	SILK VISCOSE SATIN £31
COTTON VALDEZ £24	CREPE DE CHINE MEDIUM £32
COTTON DRILL £24.50	CREPE DE CHINE HEAVY £35
COTTON JERSEY EDEN £28	TWILL SILK £32
BAMBOO JERSEY £28	SATIN SILK £34
COTTON LYCRA RIO £29	SHANTUNG SILK £35
COTTON LINEN TRAMORE £27	WOOL DELAINE £35
JUNIPER LINEN £29	WORSTED TWILL WOOL £36

Please Note: These prices are per metre. This is a rough guide, there is no minimum fabric purchase.

COLOUR LASER PRINTING

We have a Xerox Phaser 7800 colour laser printer with Matt or Silk paper at different weights in stock, it will print double sided and will take paper up to 350gsm.

It is possible to send your **A4 & A3** Laser prints from the **EPI Centre** at any time, using the XF unidriver, Your Job will go to the laser print queue and we can estimate a time for collection. Prints are collected from Room OC08.

Please Note: It is best to save your file with a name you can recognise and it is helpful to include the paper type and if you want double sided (Duplex) or single sheets, eg: Johnsbook-A4-matt120gsm-doublesided.pdf

Xerox Laser Prints	A4	A3	SRA3
Colour	20p	40p	60p
Duplex (double-sided)	30p	50p	70p
Black and white	15p	30p	50p

Quantity Discounts		Paper stock/weight
10 prints	5% off	Xerox Colortech Matt or Silk
20 prints	10% off	A4 & A3 - 100gsm, 120gsm, 160gsm, 250gsm & 300gsm
30 prints	15% off	SRA3 - 120gsm & 350gsm
40 prints	20% off	

TRANSPARENCIES OUTPUT

We have 4 iMac's and 2 black and white laser printers for student access to use for outputting positives on acetate or folex at A4/A3 size for use with screen printing, litho and etching. The facility is free to use but students will need to provide their own acetate or folex.

GUILLOTINE CUTTING

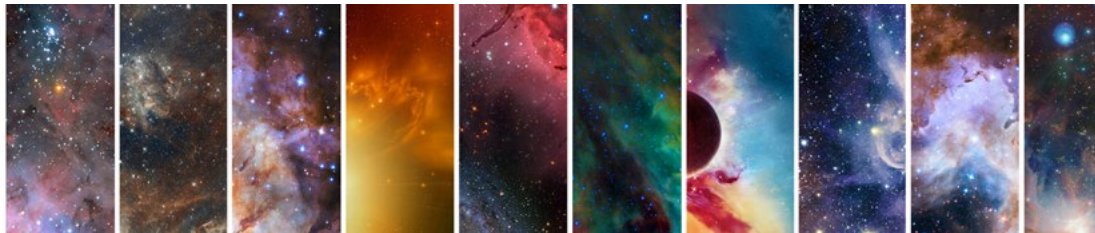
We have a large A1 size electronic guillotine for precise cutting of paper stacks and booklets. It is free to have paper cut but will need to be operated by an authorised user.

PRINT FINISHING

We have an area for students to use for trimming and cropping finished prints, we also have a booth with extraction for spray mounting work.

TERMS & CONDITIONS

- All digital wide format print jobs must be logged with Becky Hill or Ben Barter in room OC08
- All files for printing must be handed over in a workable format & saved on a USB memory stick or external hard drive.
- The scanning, cleaning & cropping of a digital image is the responsibility of the students before it is handed in.
- The responsibility of the printed output will lie with the students once the finished work has been handed over.
- The time for collection & approximate costs of finished work will be agreed before the job is started. All prints will take a minimum of 3 working days from when the file was handed in, to the finished print. At busy periods it can be up to 5 days or more.
- Every effort will be made to colour match, but please note that printed colours appear different to those on a screen.
- On agreement, all faulty prints due to equipment malfunction will be re-run at no extra cost.
- The finished work will handed over untrimmed. The cropping of finished work is the responsibility of the student.
- Payments will be made through the student card system before collection of the finished print. Under no circumstance will work be handed over without payment.



UWE Students can spend your £75
yearly materials allowance with us!

OPENING HOURS

for print file drop off and pick up

MONDAY - FRIDAY

10.00_{am} - 1.00_{pm} & 2.00_{pm} - 4.00_{pm}

digitalprint.bowerashton.org

Room OC08 Bower Ashton

email: digitalprint@bowerashton.com

tel: 011732 84789

2016 - 2017

