



DIGITAL PRINT BUREAU

TRANSPARENCIES
FOR SILKSCREEN

* PRINT CENTRE *

* PRINTED TEXTILES *

* LITHOGRAPHY *

* ETCHING & EMBOSSING *

TRANSPARENCY INFORMATION

DIMENSIONS, FILE FORMATS & PRICES



We have two laser printers that students can print directly onto A3 and A4 **Folex** from photoshop.

This service is free and Folex is available to purchase from the Art Shop.

PRINTING A4 & A3 FOLEX FROM PHOTOSHOP

1. **File** → Open...

2. **Layer** → Flatten Image

3. **Image** → **Mode** → Greyscale

4. If image needs darkening...

Image → **Adjustments** → Levels or Brightness/Contrast

5. **Image** → **Image Size** → Make it A3/A4 size

Resolution 150 ppi - 300 ppi

6. **File** → **Print** → Select printer → Student Digi Printer 1 or 2

Print Settings → Show Details → Paper Size A3/A4

7. Scroll down in colour management → Scale to fit media

8. Print

Folex can alternatively be printed out in the Epi Centre, please see a member of staff for advice.

COLOUR SEPARATIONS

A4/A3 Folex 4 colour separations for Screen & Litho printing can be printed using our two student laser printers, please refer to '4 colour separations for Screen & Litho printing' section in this handout.

Larger files for colour separations have to be split and saved onto separate files and printed on the wide format printer. Save each file as a flattened **Jpeg, **300 ppi** resolution and in **Greyscale** colour mode.**

FILE FORMATTING FOR TRANSPARENCIES

PAPER SCREENPRINT:

Wide Format: files need to be saved as a flattened **Jpeg**
300 ppi resolution and **Greyscale** colour mode.

Saved at the size you require e.g. A2/A1

A4/A3 Folex: files need to be saved as a flattened **Jpeg**
150 ppi resolution and **Greyscale** colour mode.

Folex can be purchased in the Art Shop.

Paper silkscreen transparencies can be printed with various halftones and dot sizes.

TEXTILES SCREENPRINT:

Wide Format: files need to be saved as a flattened **Jpeg**
300 ppi resolution and **Greyscale** colour mode.

Saved at the size you require e.g. A2/60x90cm/60x130cm

A4/A3 Folex: files need to be saved as a flattened **Jpeg**
150 ppi resolution and **Greyscale** colour mode.

Folex can be purchased in the Art Shop.

Textiles silkscreens have a bigger mesh count which allows more ink to pass through.

Therefore any grey areas will not come out on the screen after it has been exposed.

Images have to be high contrast black & white.

You can create the illusion of grey by breaking up black areas with various mark making techniques such as cross hatching, different sizes of black lines and dots. If you need to darken your image this can be done in Photoshop using Levels or Brightness/Contrast.

LITHOGRAPH:

Wide Format (No Halftone) up to 60x65cm maximum: see above

A4/A3 Folex: see above

Lithographic transparencies can be printed with various halftones and dot sizes up to A3 size. You must **Horizontally flip the image** before printing, this can be done easily in Photoshop. You can change your image to a bitmap to achieve a grain like dot then convert it back to greyscale.

PHOTO ETCHING:

Maximum A4 Folex: see above

Photo Etching does not allow for any halftone.

Images have to be high contrast black & white.

EMBOSSING & DEBOSSING:

Maximum A3 Folex: see above

Photo Etching does not allow for any halftone. Images have to be high contrast black & white. For Debossing you must **Invert the image** before printing, this can be done easily in Photoshop.

4 COLOUR SEPARATIONS FOR SCREEN & LITHO PRINTING

- 1 In InDesign, open a New Document, make the dimensions the same size as your image (It's best to have your image at least 2cm smaller than your folex sheet, A4 or A3 to accommodate registration marks).
 - 2 Go to Print > In the print dialog box click Setup, choose the correct printer, paper size and in Page Position, center the image.
 - 3 Click on Marks and Bleed, tick Crop Marks, Registration Marks and Page information.
 - 4 Click on Output, Change Colour to Separations. Highlight each colour and enter the conventional screen values:
Cyan 15° • Magenta 75° • Yellow 0° • Black 45°
- With a maximum halftone of **85 lpi** for screen printing and **150 lpi** for litho.
- 5 Click Print.

CREATING DUOTONES

- 1 Open your image in Photoshop.
- 2 Go to Image > Adjustments > Black&White, then move the sliders to create your own black and white image.
- 3 Choose Image > Mode > Grayscale, click discard. Then choose Image > Mode > Duotone, to display the Duotone Options dialog. From here you can pick the type of Duotone you would like.
- 4 The default first color is black, add a second color or change both of them (the colour you pick will not effect the final Litho/screen print).
- 5 Click the curve icon to adjust the duotone application. Highlights are to the right, and shadows are to the left. Drag upwards to apply more color, or drag down to apply less color. Click Ok when finished.
- 6 Go to File > Save As a .psd.
- 7 In InDesign, open a New Document, make the dimensions the same size as your image (It's best to have your image at least 2cm smaller than your folex sheet, A4 or A3 to accommodate registration marks).
- 8 Go to Print > In the print dialog box click Setup, choose the correct printer, paper size and in Page Position, center the image.
- 9 Click on Marks and Bleed, tick Crop Marks, Registration Marks and Page information.
- 10 Click on Output, Change Colour to Separations. Turn off any process colours that you are not using by clicking the printer icon next to them. Highlight the darkest colour you are using and change the Frequency to 75 LPI for screen printing (150 LPI for Litho). Change the angle to 45°. (continued over >).

Highlight your other colour, Change the Frequency to 75 LPI for screen printing (150 LPI for Litho). Change the angle to 75°.

11 Click Print.

OUTPUT TRANSPARENCIES FOR SINGLE COLOUR HALFTONE SCREEN PRINTING IN INDESIGN

1 Open a new document A4/A3 in InDesign

2 Drag your image onto the page.

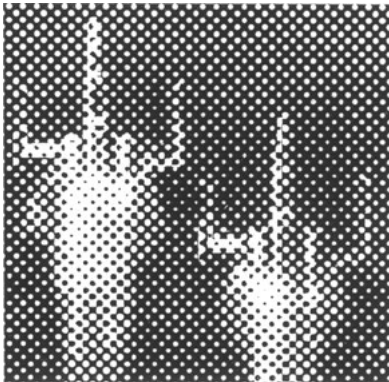
(your greyscale image must be at the right size for printing at 300ppi, edit in photoshop if it's not ready, save as highest quality Jpeg).

3 Go to Print - choose the correct printer.

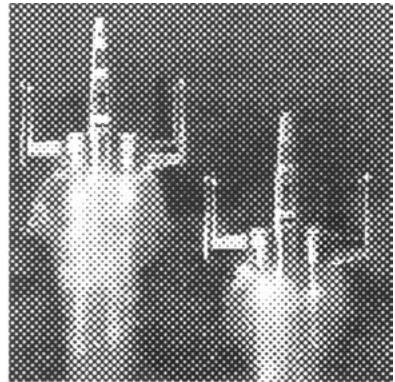
4 Click Setup - choose **paper size**, **orientation** and **page position**: center image.

5 Click Output - **colour**: composite grey **screening**: custom - **frequency**: eg; 75 lpi (A smaller lpi will result in a coarser/larger dot size).

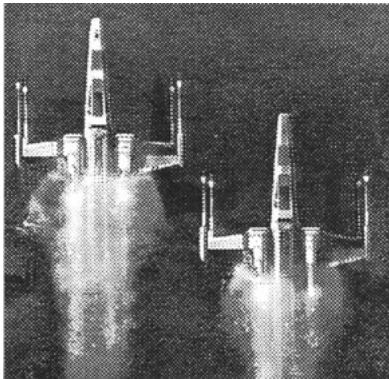
6 Click Print.



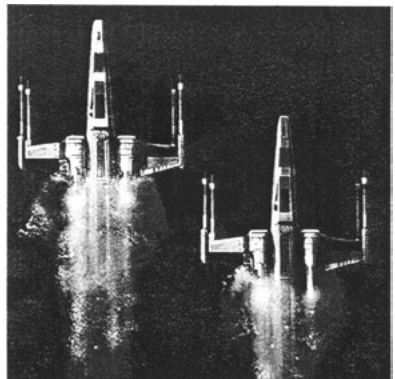
20 lpi



35 lpi



75 lpi



150 lpi

We can print onto larger size transparencies using the Inkjet Wide Format printer and our own supply of film. The maximum width of this film is 60cm and it comes on a roll so it can print as long as you need in length. Please take into consideration the maximum silkscreen sizes. Talk to a technical member of staff in the given area before printing any transparencies to check availability and advice, as each area have different requirements.

WIDE FORMAT TRANSPARENCY PRICES

Save your image onto a memory stick or hard drive as a **JPEG**. Your job will then be booked in and we can estimate time for collection and final price. Please pay via the student card system. Top up your student card in the Art shop & bring it back to pay when you pick up.

TEXTILE SCREENS

A2 - 42cm x 59.4cm	£4
A1 - 59.4cm x 84.1cm	£8
Medium Screen - 60cm x 90cm	£8
Large Screen - 60cm x 130cm	£10

SCREENPRINT

A2 - 42cm x 59.4cm	£4
A1 - 59.4cm x 84.1cm	£8

LITHOGRAPHIC

Max. plate Size - Up to 60cm x 65cm	£5
--	----

TERMS & CONDITIONS

- All digital wide format print jobs must be logged with Becky Hill or Ben Barter in room OC08
- All files for printing must be handed over in a workable format & saved on a USB memory stick or external hard drive.
- The scanning, cleaning & cropping of a digital image is the responsibility of the students before it is handed in.
- The responsibility of the printed output will lie with the students once the finished work has been handed over.
- The time for collection & approximate costs of finished work will be agreed before the job is started. All prints will take a minimum of 3 working days from when the file was handed in, to the finished print. At busy periods it can be up to 5 days or more.
- Every effort will be made to colour match, but please note that printed colours appear different to those on a screen.
- On agreement, all faulty prints due to equipment malfunction will be re-run at no extra cost.
- The finished work will handed over untrimmed. The cropping of finished work is the responsibility of the student.
- Payments will be made through the student card system before collection of the finished print. Under no circumstance will work be handed over without payment.



UWE Students can spend your £75
yearly materials allowance with us!

OPENING HOURS

for print file drop off and pick up

MONDAY - FRIDAY

10.00_{am} - 1.00_{pm} & 2.00_{pm} - 4.00_{pm}

digitalprint.bowerashton.org

Room OC08 Bower Ashton

email: digitalprint@bowerashton.org

tel: 011732 84789

2016 - 2017

